

Clustering K-Means Algorithms and Econometric Lethality Model by Covid-19, Peru 2020

Javier Pedro Flores Arocutipa¹
Universidad Nacional de San
Agustín, Arequipa, Perú

Jorge Jinchuña Huallpa²
Universidad Nacional de Moquegua
Moquegua, Perú

Gamaniel Carbajal Navarro³
Luís Delfín Bermejo Peralta⁴
Universidad José Carlos Mariátegui
Moquegua, Perú

Abstract—Objective: The study looks at how the Covid-19 wave was in Peru, where and when it begins, where and when it culminates. As it faced, the shortcomings that were detected and especially that very little could be done to confront the disease as an emerging country. The wave began in May and ended in August with the greatest number of deaths and then fell. **Methodology:** Basic, explanatory level, with SINADEF data by region, of the situation room, to get the number of deaths, between January and September 2020/2019. **Results.** The relationship between infected and deceased was found a Pearson Rho of 0.94. The total death toll model depends on Lima, Huánuco, and Piura. The differences between the deaths of 2019 and 2020 were corroborated with the ANOVA, where a bilateral sig of 0.042 was got. The COVID cycle is found in the cluster algorithm model, of the nine months in 44.4% of them, it generated the highest lethality, between May and August. **Conclusion.** It is proven that COVID devastated regions of Peru. The model generated by the K-Means algorithm tells us that the COVID-19 cycle began in March and reached its highest peak of deceased and then descended.

Keywords—Infected; lethality; COVID 19 cycle; razing

I. INTRODUCTION

From March to October 2020, COVID-19 completed its cycle and showed the health crisis in Peru. The first wave would have passed, and it left 90 thousand dead according to SINADEF. Could anyone claim they existed, strategies with positive results against COVID-19? The answer is no. From Iquitos, Ucayali, Piura, Callao, Arequipa, Moquegua, Ica among other regions, allows us to compile what happened, since the MINSa, Essalud, and Diresas, [2] do not yet find the way, of what needs to be done in a holistic and holistic approach to prevention, diagnosis, treatment, and recovery.

The work of [3] also demonstrates the enormous number of deaths is in inverse relation to the shortage of doctors, beds, and Public expenditure per capita, in 30 countries of Europe. The car showed fewer inputs for the disease, more deceased. However, the investigation finds [4] that the greatest number of deaths are related to corruption rates, calling them risk factors.

There were little prevention and minimal targeted action. Although public policies propose that molecular testing is vital in diagnosis; it still uses rapid testing. They have caused more problems and are not blunt. The MINSa uses rapid antigen detection tests, erratic measurement since rapid tests are not useful for early diagnosis because such a test only finds

antibodies from day 10. Therefore, thousands of patients did not receive timely treatment, increasing the number of deaths in and outside the hospital, which reached its peak in May and then followed other regions, until August.

What did doctors learn from the experience between May and August in Peru?

In May 2020, they said that in Iquitos, Ucayali Piura, Callao; cases were decreasing. However, specialist and non-specialist people were focused on taking medicines to avoid reaching the third phase of the disease, a critical stage between life and death. Another is the lack of knowledge that COVID patients developed pneumonia, which led doctors in the regions to use very early tomography scans. The patient, on the third, fourth, and fifth day of illness, had a CT scan whose reports showed lung involvement (10% to 30%). The treatment showed apparently harmed the patient and sped up the path to the grave.

It can be concluded that from Iquitos to Tacna in Peru, they had the same problems because they used the same strategies even though they had 2, 3, or 4 months to prepare. And if they did, it did little good.

In Table I, the timeline of what happened between January and October in the world takes us that there is always a month or a “peak” day where there was the greatest number of deaths, it is infected who generate after days the number of deaths. For example, the highest number of deaths in China was on February 22, in Spain and Italy was the last third of March, the United Kingdom, and France reached the highest number of infected and deceased in April. Russia and Ecuador had in May, Peru had its hard month in June, Brazil in July, and Argentina with Colombia in August.

II. METHODOLOGY

It is a basic study of descriptive level, with the non-experimental design of the explanatory level. The analysis was mortality by regions in 2020. SINADEF, the Ministry of Health, and the regional health directorates of the regions of Peru were contacted. We tabulated the data of 24 regions in infected and deceased, included in some steps by districts to observe the difference between urban and rural. Pearson’s coefficient of determination and correlation and K-Means algorithm was applied. And variance analysis for related samples. Groups of regions have been defined by stages as they reached the maximum number of deaths in this PO.

III. RESULTS

The COVID 19 cycle in the world (Table I) shows peak dates. Thus, the maximum number of daily infected in the first wave (PO) in the United States, occurred on April 4 with 34582 daily, in the second wave was on July 2 with 79651 infected and in the third cusp that was on December 11 with 247414 infected. The highest number of daily deaths was on April 21 with 2743 deaths, on July 30 with 1853, and on December 9 with 3263. In France, in the first wave, it had a maximum of infected, on March 31 with 7578 infected and in the second wave on November 7 with 88790 daily. Those who died on April 15 were 1437, in the second wave (SO), on November 13, with 932 deaths. In Italy, on 21 March, the number of cases infected was 6554, while in the second wave, on 13 November, it was 40896. The deaths on March 27 of 921 died, in the second wave, December 3, with 993. In the UK in the PO the maximum arrived on April 10 with 7860 infected. In the OS on November 12 with 33470 infected. So also, in the PO, on April 21 with 1166 deaths while in the SO on November 25 with 696 deaths. In Spain, on March 20, in the PO the maximum daily was 10654, and in the OS on October 27 with 22641 infected, the maximum number of deaths in the PO was on April 2 with 996 deaths and in the OS the maximum daily was on November 24 with 537. This scenario leads us to ask how was the approach of COVID 19 in the world and especially in Peru by regions in the first wave (PO)?

In the PO, in January 2020, the OMS proclaimed to the world the disaster of the COVID-19 outbreak, which advanced at an indescribable speed, becoming the worst pandemic of this century. It started in China, crossed the countries of Europe, and reached Latin America in a few weeks. In Peru, according to medical specialists (infectologists, epidemiologists, among others) “raze” from Iquitos to Tacna, collapsing the supply of the health sector, exposing the deficiencies of infrastructure, its equipment, logistics of medicines, besides the competencies “in crisis” by health workers, expressed by fallacies in the treatment and use of medicines, who through ignorance and uncertainty used medicines - now withdrawn and outside the protocols of the MINSA - such as Azithromycin, Ivermectin, Hydroxychloroquine [1], including chlorine dioxide.

In the regions of Peru, what could be done? In Table II, we can observe it that the regions reached their highest peak of deaths during May, June, July, and August. In the first group are; Callao, Loreto, Ucayali, and Piura where the highest level of deceased, was in May (Fig. 1), then there is, Ancash, La Libertad, Lambayeque, Lima, Madre de Dios, San Martin, and Tumbes, here the highest ridge occurred in June (Fig. 2). In third place are the regions Amazonas, Arequipa, Cajamarca, Huánuco, Ica, Junín (Fig. 3) that had the highest number of deaths in July, and close with Ayacucho, Cusco, Huancavelica, Apurímac Moquegua Pasco, Puno, and Tacna in August (Fig. 4). Everything suggests that there was never a real strategy against Covid in Peru, or the impotence of not being able to do anything. Then COVID 19 will "walk" around the country. After sweeping the northern regions it enters the center and then to the south, for August raze Puno, Moquegua, and Tacna. The razing concept I use [5] when he tells us that in the middle of the nineteenth century the various global diseases demolished (cholera) Europe, is not that there is nothing left

but that anger did what it wanted with human beings in the West without problems that prevent it from being transnational (p.1). Table II shows that in Loreto, by March it had 211 dead, in April 474, and in May it reached the maximum of 1166 and then descend to 472 in June and in September to reach 229 dead. This is seen in all regions. Nothing prevented it from reaching the peak of death and then descending.

TABLE I. WORLD COVID-19 TIMELINE

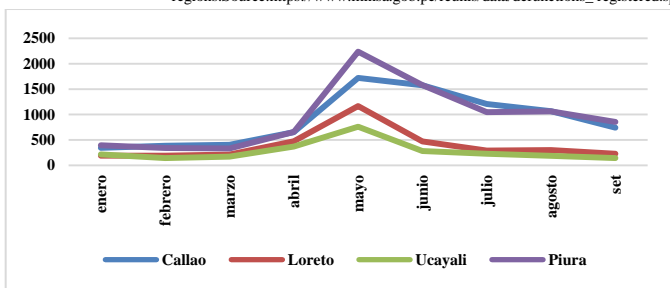
Countries	Jan	Feb	March	April	May	Jun - July	August	Sep	Oct
China	Jan-22	Feb-22	Mar22						
Infected	259	14108	40						
Deceased	8	142	22						
Spain		8-Mar	20-Mar	2-Abr	8-May	4-Jun			
Infected		2221	10856	4618	344	360			
Death		7	262	961	213	25			
Italy	25-Feb	21-Mar	27-Mar	30-May	30-Jun				
Infected	94	6554	5907	417	142				
Deceased	4	796	921	112	23				
UK		14-Mar	10-Abr	21-Abr		14-Jul			
Infected		310	7860	3896		398			
Deceased		18	1149	1166		46			
France		9-Mar	31-Mar	15-Abr	9-May				
Infected		203	7578	2633	433				
Deceased		3	498	1437	80				
Russia		27-Mar		15-Abr	29-May	1-Jul	15-Ago	6-Sep	22-Oct
Infected		196		3388	8572	6556	5061	5195	15971
Deceased		1		28	232	216	119	61	317
Ecuador		18-Mar	24-Abr	4-May	10-May	14-Jul	15-Ago	15-Sep	21-Oct
Infected		154	7059	2178	407	1033	1189	1972	1510
Deceased		2	25	301	640	105	55	41	47
Peru			22-Mar	19-May	31-May	17-Jun	5-Jul	16-Ago	22-Oct
Infected			32	4550	8805	3752	3638	10143	2991
Deceased			2	271	253	302	163	206	47
Brazil			1-Apr	4-Jun	19-Jun		29-Jul		22-Oct
Infected			1163	31890	55209		70869		31985
Deceased			41	1492	1221		1554		503
Argentina		31-Mar					29-Jul	22-Ago	22-Oct
Infected		159					8670	13056	8570
Deceased		2					380	400	172
Colombia				1-Abr	14-May	10-Jun	30-Jul	19-Aug	22-Oct
Infected				159	680	6803	9965	13056	8570
Deceased				4	21	61	380	400	192

Note: The cycle in the world was not uniform began in China, and reached its highest level and continued with the other countries until August, which reaches Colombia and Argentina. The virus passed through the world. Source: <https://www.worldometers.info/coronavirus/>

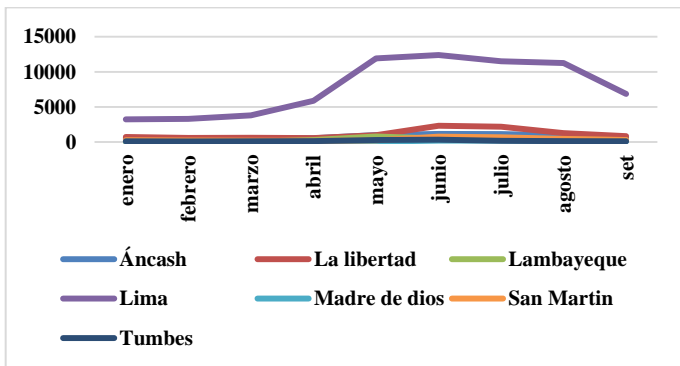
TABLE II. DEATHS TIMELINE BY REGION

Peru, deaths: Timeline by region-2020									
Region	Jan	Feb	Mar	Apr	May	Jun	Jul	Aug	Sep
Loreto	189	191	211	474	1166	472	292	301	229
Ucayali	215	144	171	369	761	282	229	186	143
Piura	395	341	331	657	2239	1581	1046	1064	854
Lambayeque	42	52	46	280	790	486	376	333	290
Callao	346	386	404	652	1722	1577	1209	1065	743
Ancash	473	465	492	531	1002	1160	1131	955	616
La libertad	719	574	597	569	972	2309	2183	1259	838
Lima	3220	3300	3792	5866	11910	12390	11508	11260	6851
Madre de Dios	88	51	59	43	69	194	193	121	77
San Martin	258	209	205	173	247	764	685	437	288
Tumbes	114	82	97	122	288	336	172	131	105
Amazonas	82	77	62	61	76	112	194	115	85
Arequipa	579	576	566	576	657	1208	2647	1889	828
Cajamarca	306	250	245	227	282	373	832	666	465
Huánuco	280	240	250	242	272	377	532	480	309
Ica	368	388	344	402	822	1231	1292	985	602
Junín	523	500	550	427	638	713	1390	1186	736
Ayacucho	174	155	135	135	177	174	251	317	229
Cusco	573	496	479	447	454	516	798	1415	687
Huancavelica	165	153	157	193	191	194	267	356	210
Apurímac	131	132	121	140	161	175	188	248	245
Moquegua	75	57	60	42	55	90	319	446	112
Pasco	99	78	81	63	103	86	148	170	106
Puno	377	414	358	347	385	406	715	1568	658
Tacna	108	93	95	74	101	106	240	477	202

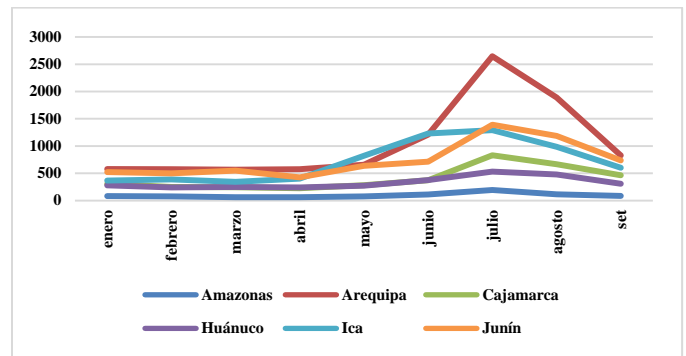
Note: The highest elevation started in May through August regions. Source: https://www.minsa.gob.pe/reunis/data/defuncions_registered.sp



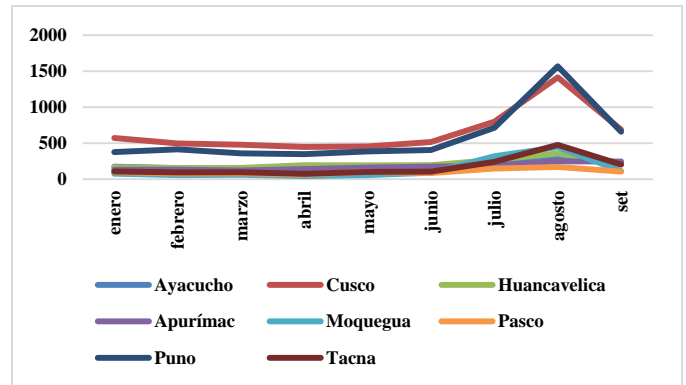
Note: The cycle reached its highest point in May, then fell.
Fig. 1. Regions with the Highest Deaths in May 2020.



Note: The cycle reached its peak in June, then descended.
Fig. 2. Regions with the Highest Deaths in June 2020.



Note: The cycle reached its peak in July, then descended.
Fig. 3. Regions with the Highest Deaths in July 2020.



Note: The cycle reached its peak in August, then descended.
Fig. 4. Regions with the Highest Deaths in August 2020.

Between January and September of the years 2019 and 2020 (Table III), it made a comparison of the number of deaths for all concept. This according to SINADEF data and globally in the analysis period in 2019 69 024 people died and in the year 2020, 167953, the difference, is an excess of 98926 deaths.

It is in Lima, where the greatest number of people died, from 22629 in the period January to September 2019 to 70097 in the period January to September 2020, a difference of 47418 people.

Then, the second region where more people died was Piura with 8508, there is an excess of 6431 people, in freedom the excess was 5262 people, in Arequipa with 4484 people in excess, also Ica with 3129 people in excess, Junín with 2826 people in excess, the silence that had 5292 people in excess, in Moquegua the excess was 667 people.

In 2020, 167950 people died between January and September. Of these, Lima concentrates 41.74%, freedom 5.97%, Arequipa 5.67%, Piura 5%, and Callao with 4.83%. They are the first five regions in the death ranking.

The difference between the deaths in 2020 and 2019 was a total of 98926. And of these, Lima concentrates 47.9%, La Libertad with 5.3%, Arequipa with 4.5%, Piura with 6.5%, and Callao with 5.3%. The percentage increase of the first five ranking regions leads us to point out that in the Lambayeque region the increase was 524%, five times more. It went from 432 deaths to 2695 in 2020.

TABLE III. DEAD TIME LINE ALL CONCEPT

All concept deaths, by region 2019-2020			
Region	Jan-Sep 2019	Jan-Sep 2020	Difference
Callao	2813	8104	5292
Loreto	1205	3525	2320
Ucayali	1190	2500	1310
Piura	2077	8508	6431
Ancash	3582	6825	3243
La Libertad	4758	10020	5262
Lambayeque	432	2695	2263
Lima	22679	70097	47418
Madre de Dios	498	895	397
San Martin	1380	3266	1886
Tumbes	705	1447	742
Amazonas	548	864	316
Arequipa	5042	9526	4484
Cajamarca	1637	3646	2009
Huánuco	1657	2982	1325
Ica	3305	6434	3129
Junín	3837	6663	2826
Ayacucho	678	1747	1069
Cusco	4383	5865	1482
Huancavelica	1097	1886	789
Apurímac	1101	1541	440
Moquegua	590	1256	667
Pasco	421	934	513
Puno	2739	5228	2489
Tacna	669	1496	827
TOTAL	69024	167950	98926

Note: The difference in deaths between January and September 2020 compared to 2019 was 98926.

In the same way Piura, with an increase of 310%. Passed from 2077 to 8508 deceased. In Lima, the number of deaths increased by 209%, from 22679 to 70097. In Callao, the number of deaths increased from 2813 to 8104, an increase of 188%. In the ranking, Loreto is in fifth place with an increase of 192%, from 1205 to 3525 deaths. The national average was 143%.

The average percentage lethality rate between May 15 and August 1, 2020, in Peru was 3.09%, meaning that for every 100 infected 3 had died.

The region with the highest rate was Ica with 6.81%, meaning for every 100 infected people 7 had died. In Lambayeque in the same way (6.8%). In Ancash, Piura, and Tumbes the deaths per 100 were 6. In the same way in the Loreto and Libertad region where it was 5 per 100.

In Amazonas, Callao and Ucayali are three people out of 100 who died. In Ucayali, Arequipa, Lima, San Martin, Junín, Pasco, Apurímac, Puno, Huánuco, Tacna, and Cajamarca had 2 per 100. And in Madre de Dios, Ayacucho, Huancavelica, Moquegua and Cusco was one person dead for every 100 infected.

Today, it can be stated based on empirical evidence that 98.5 percent of the deceased are adults and older adults [6], in the same way, they observe it in the relationship between infection and lethality. This is quite high. Calculations have been made for 75 days between May and August 2020. In the regions, determination and correlation coefficients have been found that exceed 0.70 and reach 0.996. The containment or self-containment measures have threatened mortality, as claimed [7], even though the infection did not stop. This should be investigated.

If the infected grow in proportion, the deceased will grow. This reality is definitively repeated in Ica, Ancash, La Libertad, Apurímac, San Martín, Moquegua, Pasco, Tacna, Huánuco, Callao that are above 0.97%, another high impact group is, Ayacucho, Lima, Madre de Dios, Tumbes, Piura, Lambayeque, Ucayali, Arequipa (Table IV), which are above 0.94 or 94%, in the third group are Loreto, Huancavelica, Cajamarca, Junín, Amazonas which are above 90% up to 94%. Cusco has a ratio of 0.845 that is significant and high, but not as high as that of the Ica region

Concerning the levels of explanation of deaths by the variable infected, it can be said that this ranges from 81.6% to 99.1%. All direct and meaningful.

There are differences (Table V) between those who died in 2019 and those who died in 2020. Sig. has been achieved, bilateral 0.042 denoting that the calculated t is greater than the table t. Differences between the data are accepted.

TABLE IV. HIGHER INFECTED COVID-19 HIGHER LETHALITY

Region	R ²	R
Ica	0.991	0.996
Ancash	0.984	0.992
La Libertad	0.983	0.991
Apurímac	0.981	0.990
San Martín	0.975	0.988
Moquegua	0.971	0.985
Pasco	0.963	0.981
Tacna	0.958	0.979
Huánuco	0.956	0.978
Puno	0.949	0.974
Callao	0.942	0.970
Ayacucho	0.935	0.967
Lima	0.934	0.966
Madre de Dios	0.926	0.962
Tumbes	0.926	0.962
Piura	0.925	0.962
Lambayeque	0.899	0.948
Ucayali	0.897	0.947
Arequipa	0.892	0.945
Amazonas	0.866	0.930
Junín	0.855	0.925
Cajamarca	0.850	0.922
Huancavelica	0.818	0.904
Loreto	0.816	0.903
Cusco	0.714	0.845

TABLE V. MATCHED SAMPLE TEST

Matched differences				t	Gl	Sig. (bilateral)	
Average	Standard deviation	Average of standard error	95% difference confidence Interval				
			Inferior	Superior			
-3957,0	9211,7	1842,35	7759,51	154,64	2,148	24	,042

The results of sig. (bilateral) is less than 0.05.

The econometric model that explains the total number of deaths by region is as follows:

$$\text{TOTAL DEATHS} = -2081.89357334 + 1.35125103834 * \text{LIMA} + 24.8222422247 * \text{HUANUCO} + 2.10959941364 * \text{PIURA}$$

$$R^2 = 0.9996, (0.0019) (0.0000) (0.0001) (0.0073) \text{ DW } (2.70)$$

And it can be concluded that in the period January to September of the year 2020, the regions of Lima, Huánuco, and Piura that are the independent variables, explain in an R2 of 0.9996 the total of deceased given that, probabilistic is less than 0.05 and obviously, the Durwin Watson is 2.70 that being around 2 shows us it is an acceptable model.

We would like to know what the impact of the deaths in Lima is on the total number of deaths. In practice, it can be said that for each percent that the deaths in Lima increase, it has an impact of 0.40% on the total number of deaths in the country. Likewise, in Huánuco, for each percent of those who die has an impact of 0.46% on the national total.

If in Piura increases by one percent, the number of deaths the impact on the total deaths is 0.2%. With certainty, we can say it that if the number of deaths in Lima increases by 10%, the number of deaths in Peru will increase by 4.3%. There's the regression model:

$$\text{LOG (TOTAL DEATHS)} = 1.83321127186 + 0.436468121477 * \text{LOG (LIMA)} + 0.465169428114 * \text{LOG (HUANUCO)} + 0.205749187226 * \text{LOG (PIURA)}$$

$$(0.0003) (0.0046) (0.0009) (0.0208) \text{ DW } (2.42)$$

Another observation got when analyzing the regions; Arequipa, Puno, Tacna, and Moquegua, is when the greatest number of deaths are concentrated in the urban part and mainly in the capital city. In Arequipa in July, there were 2647 deaths of that total, 2147 died in Arequipa, while in Islay 81, Caylloma with 75, in Camana 50, in Caravelí 19, in Castilla 19, in Condesuyos two and Union 5.

The same happened in Puno. Two cities, San Roman, which is Juliaca, and Puno the capital. In August there were 1,568 people dead. And in San Román-Juliaca there were 580 and in Puno 431 dead. The summation generates 1000 people, then Huancané 111, Azángaro 72, Collao 63, Melgar 62, and so on. With Moquegua, it should be stated that the two provinces concentrate almost the total of the deceased. They are Marshal Nieto 311 and Ilo 121 deceased.

In Tacna, in August 477 people died, and in the four provinces, in Tacna 448 other provinces died, Jorge Basadre 14, Candarave 6, Tarata 9.

In conclusion, it can be said that the greatest number of deaths are in urban areas and linked to the capitals of regions, while in rural areas the penetration of the COVID was in a smaller proportion and from there also the low number of deaths.

COVID-19 has questioned us on multiple aspects related to decision-making in public health, from health communication to the legal bases of prevention measures, monitoring of infection-related behaviors [8], or the application of epidemiological models.

The algorithm found by regions has variability and are concentrated in some 9 months analyzed, which allows us to observe that three clusters have formed (Fig. 5), three groups are observed. And that is one of them: it concentrates the last results, pointing out that there is correlate in the chain and with quite marked lethality peaks. It was the months of May, June, July, and August (Table VI). It contrasts with what reality presents. The article Mathematical Physical Modeling [9] showed that peaks can be found two weeks in advance.

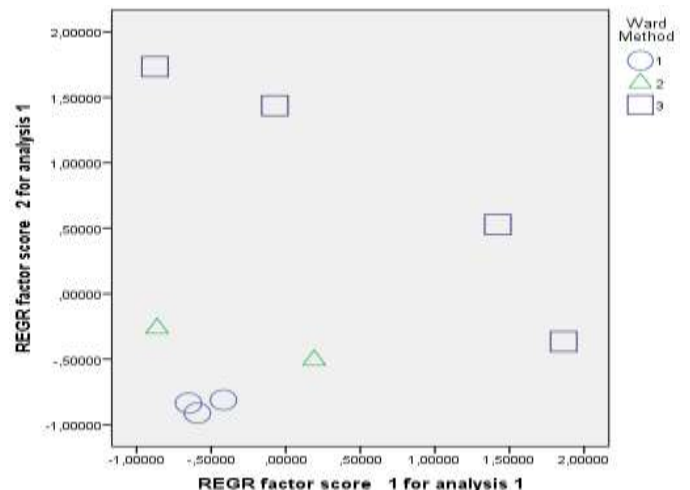


Fig. 5. Three Final Clusters.

TABLE VI. FINAL CLUSTER CENTERS: LETHALITY BY REGION

Regions	Cluster		
	1	2	3
Callao	378,67	697,50	1393,25
Loreto	197,00	351,50	557,75
Ucayali	176,67	256,00	364,50
Piura	355,67	755,50	1482,50
Áncash	476,67	573,50	1062,00
Libertad	630,00	703,50	1680,75
Lambayeque	46,67	285,00	496,25
Lima	3437,33	6358,50	11767,00
Madre de Dios	66,00	60,00	144,25
Martin	224,00	230,50	533,25
Tumbes	97,67	113,50	231,75
Amazonas	73,67	73,00	124,25
Arequipa	573,67	702,00	1600,25
Cajamarca	267,00	346,00	538,25
Huánuco	256,67	275,50	415,25
Ica	366,67	502,00	1082,50
Junín	524,33	581,50	981,75
Ayacucho	154,67	182,00	229,75
Cusco	516,00	567,00	795,75
Huancavelica	158,33	201,50	252,00
Apurímac	128,00	192,50	193,00
Moquegua	64,00	77,00	227,50
Pasco	86,00	84,50	126,75
Puno	383,00	502,50	768,50
Tacna	98,67	138,00	231,00

IV. DISCUSSION

In the papers analyzed, they show the cycle (Wave) of the COVID as can be seen in (Fig. 6) and its probable repetition, and perhaps in greater magnitude. It is known that the OMS pointed out in May that Brazil by August would have over 100 thousand dead, by the end of August this was 121 thousand dead [10]. It was said in the United States that the number of deaths would be 150,000 today reaches 400,000. It should be pointed out that the Ministry of Health does not yet determine the actual number of deaths in Peru, according to SINADEF. As of 31 December, there are 37680 deaths. From the above, we already know that the figure reaches almost 100,000 deaths from COVID in December.

Adults and older adults are the passive of deaths, in Spain, they show it is an aged country where the over 65 years are a percentage of 19% that in total are 8.7 million people [11] but is a product of life expectancy (EV) as a component of the Human Development Index. People in Europe have an 84-year-old EV just like France, Italy, and the UK.

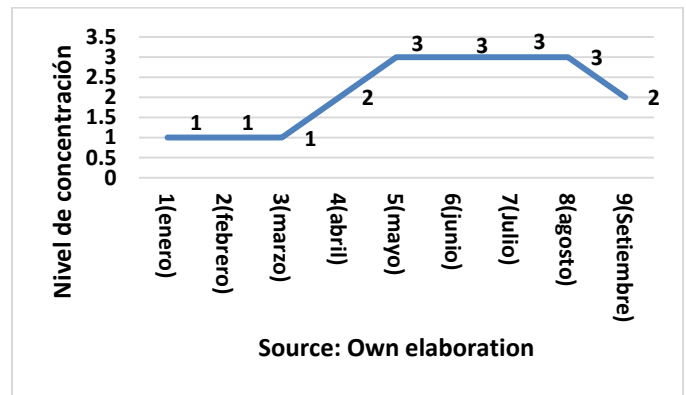


Fig. 6. Cluster De Pertinencia (3 Clusters). The Three Segments denote the behavior of Lethality.

In [12] the same way, it has been showed in Peru that in 98.5%, of the deceased are adults and older adults, other factors of death among the health sector’s own servants are the EPP, which, while aimed at administrative procedures but not at the prosecution of infections.

In [1] fact, as in Latin America, COVID-19 devastates the critical health situation in emerging countries and, of course, in Peru. The infrastructure teams are not prepared to face the COVID even from the perspective of human capital and its remunerations, which are those they face in the first phase. Although in this work it is not presented in a concatenated way. We state that from February to August 2020 it affected in maximum figures. Asia and Europe, then when entering Peru begins in regions of the east, then the north, from there the center and arrive in the Peruvian South. And gradually from May to August, sweep with death and infected too much, demonstrating the weak infrastructure of MINSA and ESSALUD.

As he tells us [5] in the middle of the 19th century, the different cholera viruses devastated Europe, not that nothing is left but that cholera did what it wanted with human beings in the world, without problems that prevent it from being transnational. In Peru, this expression is accommodated, however, we would add to it that the Wave came from Iquitos and ended in Tacna.

From now on, Lima and Callao are concerned about the levels of infected and deceased because of the urban population, but outside it the ones that have the greatest incidence are Loreto and Piura [1], meaning that the COVID appropriates the urban sector.

The deceased [1] correspond to a segment of the population, so we note that 85% of those are over 70 years old. For this reason, many Peruvians have been asking for the restructuring of the health system, that it serves Peruvian citizens [1] and in this modern world, we already know that they are linked to the sectors most affected [13], which are tourism and trade.

In [14] Latin America, analyzing the number of deaths about the number of infected reported (lethality of the disease), it was found that Ecuador, Brazil, and Argentina recorded the highest frequency of deaths by COVID-19, with percentages of

8.3%, 6.5%, and 4.4%, respectively. Chile 1%, Paraguay (1.3%) and Venezuela (1.3%) recorded the lowest frequencies in COVID-19 deaths.

The data suggest Chile is the South American country that presented the best coping strategy for COVID-19. [14], today is the best gains and implements the vaccine for its citizens.

Differences in [2], screening programs, as above, may underestimate the denominator and overestimate mortality rates if mild cases are not tested.

Age was associated with higher mortality, in our series, the highest proportion of deaths were in the age groups over 60 years, besides, that for every 10 years that the age increased, the risk of dying increased by 32%, This was described in [15], a large series of Chinese population data, in which the age groups 60 to 69, 70 to 79 and over 80 years had 3.6%, 8%, and 14.8% mortality respectively.

In conclusion, the largest series of patients hospitalized with COVID-19 in the country was reported; the population tested presented high mortality and was associated with age, comorbidities, [16] inflammatory markers, and respiratory involvement. These results could serve us to propose strategies for reorganizing the care system and to direct management differentiating in [15] patients with higher risk factors for mortality.

All this has led OMS to come up with formulas for carrying out global mortality estimates; [17] and that they are ratified by the work of [18] that the mathematical model SIR generates for Colombia teaches us that the quarantine, hygiene, distancing and budget for the EPP do not cease to allow the greatest lethality.

Or as I try [19], that is why the author got that the referred lethality was 0.9524%, is the average of 1.02%, between 0.65 and 1.34% with 149 countries.

80% of patients behave asymptomatic [20] as in Peru, and that in the absence of molecular evidence then becomes a factor of contagion and death.

The severity of COVID focuses on older adults in men rather than women and obviously, mechanical ventilation is a proportional aid. [21], [22], quarantine still influences the decrease in mortality.

If we point out that in Peru the case fatality rate was around 3% in China where the pandemic began, it was reported that the crude case fatality rate in [23] China was 2.3% in patients infected with SARS-CoV-2.

They are those over 40 years old, those who have a high risk of lethality [23], and that increases as the years go by. Dangerous is over 60 years of age.

V. CONCLUSIONS

COVID-19 demonstrated the precariousness of the health system in Peru, as in the countries of Asia and Europe, it toured the Peruvian east, then the north, it toured the center and devastated the Peruvian south and very little could be done to stop deaths. So, in May, he started in the east to end up in the south in the cycle of the highest number of deaths from

COVID-19 infection. The ratio between infected and deceased was on average quite high and direct 0.9. The total number of deaths is explained by what happens in the regions of Lima, Huánuco, and Piura. There are differences between the deaths of 2020 and 2019.

In the developed countries, the United Kingdom, Italy, Germany, France achieves levels of explanation (R2) on an average of 0.98 and finally China with 0.8184. Infection is a variable that influences and explains the behavior of deaths in the world.

The model generated by the K-Means algorithm shows the conglomerate is defined in the months of May-August, where the greatest lethality is concentrated. Above: March, April, or September.

The K-Means model shows us the behavior of lethality with fairly lofty peaks in the months mentioned.

VI. FUTURE WORK

Future work will focus on comparative analysis of the behavior of the first and second waves of covid-19, proposed model with reviews software and 2020-2021 algorithms.

Effects of the covid-19 coronavirus on employment, family income and digital education in Peru, 2020 - 2021 using econometric models.

Algorithms that explain the effects of COVID 19 on tax collection, private and public investment in Peru 2021.

REFERENCES

- [1] C. Maguiña Vargas, "Reflexiones sobre el COVID-19, el Colegio Médico del Perú y la Salud Pública Reflections on COVID-19 infection, Colegio Medico del Peru and the Public Health," *Acta Medica Peru.*, vol. 37, no. 1, pp. 8-10, 2020.
- [2] C. Maguiña, R. Gastelo, and A. Tequen, "El nuevo coronavirus y el desarrollo de la ciencia," *Rev Med Hered.*, vol. 9, no. 2, pp. 5-6, 2020.
- [3] E. Barrera-Algarin, J. L. Estepa-Maestre, Francisco Sarasola-Sanchez-Serrano, and A. Vallejo-Andrada, "COVID 19, neoliberalism and health systems in 30 countries in Europe: repercussions on the number of deaths.," *Rev. Esp. Salud Publica.*, vol. 94, p. 15, 2020.
- [4] R. Mazzucchelli, A. Agudo Dieguez, E. M. Dieguez Costa, and N. Crespi Villarias, "Democracia y mortalidad por Covid-19 en Europa," *Rev. Esp. Salud Publica.*, vol. 94, pp. 1-9, 2020.
- [5] F. Lizaraso Caparó and J. C. Del Carmen Sara, "Coronavirus and global health threats," *Horiz. Physician.*, vol. 20, no. 1, pp. 4-5, 2020, doi: 10.24265/horizmed.2020.v20n1.01.
- [6] J. P. Flores Arocutipá, J. Jinchuña Huallpa, and R. T. Condori Perez, "Validation of an Econometric Model of Lethality for Infected People COVID-19, Peru Mayo 2020," *Quipukamayoc.*, vol. 28, no. 57, pp. 17-23, 2020, doi: 10.15381/quipu.v28i57.18396.
- [7] Z. Yuan, Y. Xiao, Z. Dai, J. Huang, Z. Zhang, and Y. Chen, "Modelling the effects of wuhan's lockdown during covid-19, china," *Bull. World Health Organ.*, vol. 98, no. 7, pp. 484-494, 2020, doi: 10.2471/BLT.20.254045.
- [8] I. Hernández-Aguado and A. M. García, "Will public health be better after COVID-19?," *Gac. Sanit.*, No. xx, 2020, doi: 10.1016/j.gaceta.2020.06.004.
- [9] H. E. Sánchez Vargas, L. Beltrán Ramos Sánchez, P. Á. Galindo Llanes, and A. S. Rodríguez Salgado, "Modelación fisico-matemática para la toma de decisiones frente a la COVID-19 en Cuba Physical-mathematical modeling for decision-making against COVID-19 in Cuba Luis Beltrán Ramos Sánchez Pablo Ángel Galindo Llanes Amyrsa Salgado Rodríguez Palabras clave," *Retos Dir.* 2020, vol. 14, No. 2, pp. 55-86, 2020.

- [10] N. Muñoz, "Covid-19 in Latin America: A first glance to the mortality," *Colomb. Med.*, vol. 51, no. 2, pp. 1-2, 2020, doi: 10.25100/cm.v51i2.4366.
- [11] R. Fernández-ballesteros and S. Alonso, "Clínica y Salud," vol. 31, pp. 165-169, 2020.
- [12] E. Galán-Rodas, A. Tarazona-Fernández, and M. Palacios-Celi, "Risk and death of doctors 100 days after the state of emergency by the COVID-19 in Peru," *Acta Medica Peru.*, vol. 37, no. 2, pp. 119-121, 2020, doi: 10.35663/amp.2020.372.1033.
- [13] N. Araújo Vila, "Economic impact of the pandemic caused by COVID-19 at the global level. Analysis of the most affected sectors," *Quipukamayoc*, vol. 28, no. 57, pp. 85-93, 2020, doi: 10.15381/quipu.v28i57.17903.
- [14] M. da C. N. Pinheiro, "Current situation of COVID-19 in South America," *Point of view*, p. 2, 2020, doi: 10.22354/in.v24i3.848.2.
- [15] M. A. Vences et al., "Factors associated with mortality in hospitalized patients with COVID-19: Prospective cohort at the Edgardo Rebagliati Martins National Hospital," *Scielo Prepr.*, no. 1, pp. 1-23, 2020, doi: 10.1590/SciELOPreprints.1241.
- [16] E. P. Beriso, "COINFECTION SARS-COV-2 AND OTHER PATHOGENS," *Rev. Esp. Salud Publica*, pp. 1-4, 2020.
- [17] WHO, "COVID-19 mortality estimation; scientific note. ," vol. 19, pp. 1-4, 2020.
- [18] J. Homero, W. Visbal, and M. C. Castillo Pedraza, "Mathematical approximation of the SIR epidemiological model for the understanding of containment measures against covid-19," *Rev. española Salud Pública*, vol. 94, no. 22, pp. 1-11, 2020.
- [19] Jesús I Simón Domínguez, Nadima Simón Domínguez, and Miguel A Reyes Núñez, "How to estimate the lethality of COVID-19," *Rev. Mex. Patol. Clínica y Med. Lab.*, vol. 67, no. 1, pp. 4-8, 2020, doi: 10.35366/93845.
- [20] M. Á. Serra Valdes, "COVID-19. From pathogenesis to high mortality in the elderly and with comorbidities," *Rev. Habanera Ciencias Médicas*, vol. 19, no. 3, pp. 1-12, 2020.
- [21] B. E. L. Manuel-Gamarra-villegas and K. E. Campos-correa, "Clinical-epidemiological characteristics and analysis of survival in deaths from COVID-19. attended in accommodation of the Red Sabogal-Callao 2020," *Horiz Med*, vol. 20, no. 2, p. e1229, 2020.
- [22] P. F. Grillo-Rojas, R. Romero Onofre, and J. Aldana-Carrasco, "Comparison of early non-pharmacological interventions in COVID-19 mortality from Peru and the United States of America," *Rev. la Fac. Med. Humana*, vol. 20, no. 3, pp. 425-432, 2020, doi: 10.25176/rfmh.v20i3.3114.
- [23] C. R. Aquino-Canchari, R. del C. Quispe-Arrieta, and K. M. Huaman Castillon, "COVID-19 and its relationship with vulnerable populations," *Rev. Habanera Ciencias Médicas*, vol. 19, pp. 1-18, 2020.