

Development of a Mobile Phone Based e-Health Monitoring Application

Duck Hee Lee

Department of Electrical Engineering
University of North Dakota
Grand Forks, North Dakota, USA

Ahmed Rabbi

Department of Electrical Engineering
University of North Dakota
Grand Forks, North Dakota, USA

Jaesoon Choi

Korea Artificial Organ Center, College of Medicine
Korea University
Seoul, South Korea

Reza Fazel-Rezai

Department of Electrical Engineering
University of North Dakota
Grand Forks, North Dakota, USA

Abstract—The use of Electrocardiogram (ECG) system is important in primary diagnosis and survival analysis of the heart diseases. Growing portable mobile technologies have provided possibilities for medical monitoring for human vital signs and allow patient move around freely. In this paper, a mobile health monitoring application program is described. This system consists of the following sub-systems: real-time signal receiver, ECG signal processing, signal display in mobile phone, and data management as well five user interface screens. We verified the signal feature detection using the MIT-BIH arrhythmia database. The detection algorithms were implemented in the mobile phone application program. This paper describes the application system that was developed and tested successfully.

Keywords-Electrocardiogram(ECG); mobile phone; MIT-BIH database; health monitoring system.

I. INTRODUCTION

Nowadays, cardiac diseases are increasing in an alarming rate. According to the World Health Organization (WHO), cardiac disease is one of the leading causes of death in the developing world and is the leading cause in the developed world [1]. For these reasons, electrocardiogram (ECG) monitoring and diagnosis system is widely studied. ECG examination is a basic diagnosis procedure to find out if the patients have sporadic heart diseases, such as, arrhythmia and ischemia. Due to the growth of microcontroller and semiconductor technology, new ECG systems of small size and light weight have arrived [2]. Recent technological advances in wearable sensor networks, integrated circuits and wireless communication allow the design of light weight, low power consuming sensors at low-cost. Wearable and portable monitoring systems of physiological parameters have been studied by many research groups [3][4]. However, the majority of such health's monitoring devices are not suitable for medical monitoring of high-risk patients. Some of these systems have wireless modules, for instance Bluetooth and Radio Frequency (RF), but the development of local area networks (LAN) in hospitals have not matured yet. But a light and portable type

wireless physiological signal-retrieving system has always been a medical personnel's dream [5]. A portable smart mobile phone has various functions. In medical fields, a new generation of mobile phones will have an important impact for the development of such healthcare systems, as they seamlessly integrate a wide variety of networks and thus provide the opportunity to transmit recorded biomedical data to a server in a hospital. Consequently, this paper describes the design and implementation of a prototype mobile healthcare application system and monitoring the ECG signals of patients in real-time.

II. METHOD AND MATERIAL

The system receiving block diagram is shown in Figure 1 of which the design and architecture details are explained in the following sub-sections.

A. Software Implementation

Development of software depends on operating system (OS) of mobile device. The emergence of various form of personal mobile device and associated various OS makes it important to make a smart choice based on the application requirements. We developed the portable monitoring system prototype using the SGH-i900 Omnia SmartPhone (Samsung Co. Ltd). This mobile device is equipped with a 624 MHz Marvell PXA312 processor, internal 16 GB storage and it includes a Bluetooth v2.0 interface. This mobile device supported the Windows Mobile 6.1 Professional for Marvell processor. Therefore, this mobile device is suitable for use in this research.

B. Signal Transmission Structure

Bluetooth is an industrial specification for wireless Personal Area Networks (PANs). Bluetooth provides a way to connect and exchange information between devices such as mobile phones, laptops, PCs, printers, digital cameras, and video game consoles over a secure, globally unlicensed short-range radio frequency. The Bluetooth specifications are developed and licensed by the Bluetooth Special Interest Group. It is a

standard communications protocol primarily designed for low power consumption, with a short range (1 meter (0 dBm), 10 meter (4 dBm), and 100 meter (20 dBm)) [6]. We used the small size (18*20*12 mm), low power consumption, high reliability, and low cost FB155BC (Firmtech Co., Ltd) Bluetooth transceiver module. This device is a Bluetooth specification 2.0-support module that has an approximate range of 10-meters. The ECG acquisition hardware Bluetooth module is configured as a Master, and the mobile phone is considered to be functioning as a Slave. Figure 2 shows the ECG signals flow-chart.



Figure 1. Real-time ECG system block diagram

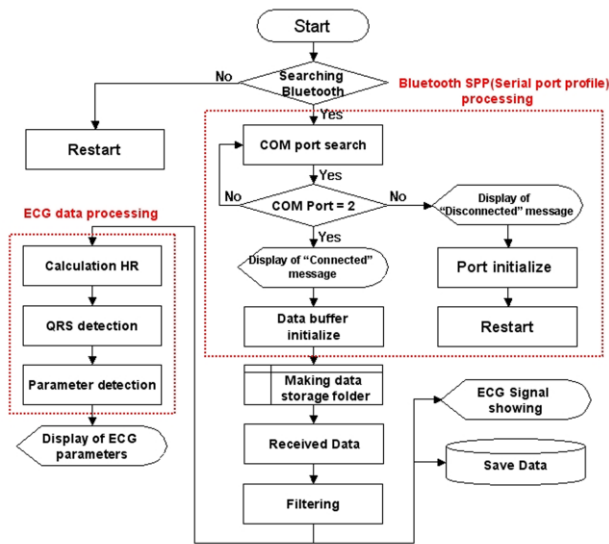


Figure 2. ECG signals receive flow chart

C. Data Management

A display of real-time ECG signals attempted on the screen display and data were saved in memory at the same time. The data were saved in binary format ASCII-code type, and rule of ECG data file name created follow; include Day, Time, a minute, and a second. For example, "xxxxxxx.ecg" is an example of the filename of the data files saved. Also, the first time measurement of the data generated were saved in new storage folder in base driver at SmartPhone. This ECG data is available for administration through the history and management screen in the application program. It also protects patient information.

D. ECG Signal Processing

Recorded physiological signals usually have an original signal contaminated with noise. The noise is encountered at every stage of data acquisition until the data is digitized. Therefore, power noise, muscular contract noise, electrode movement with signal wandering, and analog-to-digital converter noise all perturb the ECG signals. If an electrode is removed the ECG signal becomes indecipherable. Power line interference noise is electromagnetic field from the power line, which causes 50 or 60 Hz sinusoidal interference. This noise causes problem in interpreting low amplitude waveform like ECG. Hence, many methods have been utilized on the removal of the power line interference in the ECG signals [7]. The wavelet coefficient threshold based hyper shrinkage function to remove power line frequency was used in [7], a nonlinear adaptive method to remove noise was used in [8], and subtraction procedure for power line interference removing from ECG which is extended to almost all possible cases of sampling rate and interference frequency variation was used in [9]. Power line noise cancellation based on these methods take a lot of operation time, as well as difficult to apply for a real time system. Therefore, we used an Infinite Impulse Response (IIR) notch filter. Though it has short processing time, it does not consider tracking frequency or removing a specific bandwidth rather than 60 Hz peak. This system is indented for real-time processing. The difference equation for this filter is as follows.

$$y[n] = \sum_{k=0}^M b_k x[n-k] + \sum_{k=1}^N a_k y[n-k] \quad (1)$$

Another type of unwanted signal in ECG is the baseline wander. Baseline wander can be caused by respiration, electrode impedance change and body movements. Baseline wander makes manual and automatic analysis of ECG recordings difficult, especially the measuring of ST-segment deviation, which is used for diagnosis of ischemia. Baseline wander elimination has been addressed in many different ways. The most widely used method uses cubic spline filtering and linear phase filtering for estimating the baseline drift [10][11]. We used baseline wander interference cancellation method based on band-pass sixth order Butterworth digital filter. The transfer function equation of the digital filter is shown below.

$$H(S) = \frac{B(S)}{A(S)} = \frac{b(1)S^n + b(2)S^{n-1} + \dots + b(n+1)}{S^n + a(2)S^{n-1} + \dots + a(n+1)} \quad (2)$$

E. QRS detection and Heart Rate Calculation

A typical ECG signal of a normal heartbeat can be divided into 3 parts, as depicted in Figure 3 [12], P wave or P complex, which indicates the start and end of the atrial depolarization of the heart; the QRS complex, which corresponds to the ventricular depolarization; and, finally, T wave or T complex, which indicates the ventricular depolarization [13][14]. QRS complex can be identified using general ECG parameter detection method. R-peak is easier to distinguish from noisy components since it has large amplitude. Noise and spike signals appear irregularly in ECG signals.

III. EXPERIMENTS AND RESULTS

A. ECG Pre-processing

Appropriate shielding and safety consideration can be employed to reduce power line noise in addition to analog filtering as discussed in previous sections. After receiving signals at the receiver sides, it is preferred to remove this type of noise in the pre-processing step. Typically, band-stop (notch) filtering with cutoff, $F_c = 50$ or 60 Hz would suppress such a noise. Figure 4 illustrates the magnitude and phase response of a digital second order Infinite Impulse Response (IIR) notch filter with cutoff frequency of 60 Hz.

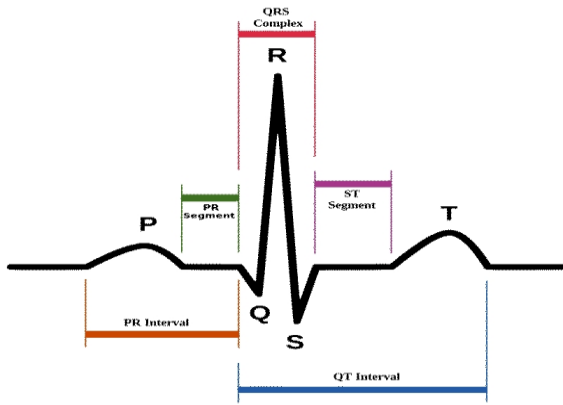


Figure 3. The general ECG waveform

After the pre-processing method, variable threshold method was used to further detect the R-peak. The formula for variable threshold value is defined as follows.

$$V_{TH} = [x(n) - x(n-1)] * 70\% \quad (3)$$

The threshold makes it possible to differentiate R peak from the baseline, which is corresponding to 70% of ECG peak data detection. We were able to find QRS complex based on the detected R-peak. Detection of QRS complex is particularly important in ECG signal processing. In our system, we used a robust real-time QRS detection algorithm [15]. This algorithm reliably detects QRS complexes using slope, amplitude, and other information. The information obtained from QRS detection, temporal information of each beat and QRS morphology information can be further used for the other ECG parameter detection. In order to detect QRS complex, the signal is initially passed through a band-pass filter. It is composed of cascaded high-pass and low-pass filters. Subsequent processes are five-point derivative (Eq. 4), square (Eq. 5), moving window integrator (Eq.6), and detection.

$$y(nT) = \frac{2x(nT) + x(nT-T) - x(nT-3T) - 2x(nT-4T)}{8} \quad (4)$$

$$y(nT) = [x(nT)]^2 \quad (5)$$

$$y(nT) = \frac{1}{N} [x(nT - (N-1)T) + x(nT - (N-2)T) + \dots + x(nT)] \quad (6)$$

We computed instantaneous heart rate directly from R-R interval. In clinical settings, heart rate is measured in beats per minute (bpm). So the formula for determining heart rate from RR interval is given below (Eq. 7).

$$\text{Heart Rate (bpm)} = \frac{60,000}{RR \text{ Interval (ms)}} \quad (7)$$

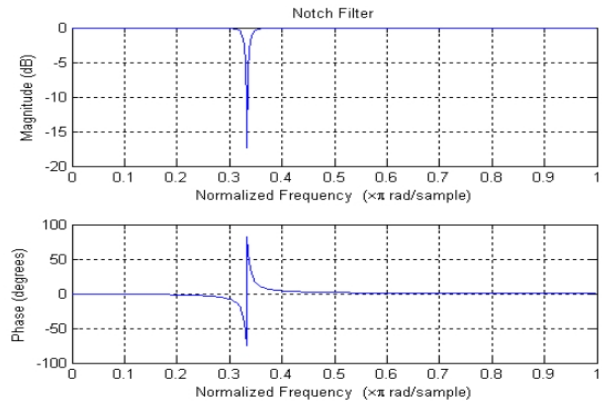


Figure 4. Magnitude and phase response of an Infinite Impulse Response(IIR) notch filter to remove 60 Hz power line noise

The frequency of the baseline wander is usually below 0.5 Hz. This information particularly helps in the design of a high-pass filter in order to get rid of baseline wander. The design of a linear time-invariant high pass filter requires several considerations, most importantly, the choice of cut-off frequency and filter order. It is important to note that the ECG characteristic wave frequencies are higher than baseline wander. Therefore, carefully designed high pass filters with cut-off frequency 0.5 Hz can effectively remove the baseline. Baseline wander removing was performed using a band-pass sixth order Butterworth digital filter with cutoff $0.7-40$ Hz. To avoid distortion, zero phase digital filtering was performed by processing the data in both forward and reverse direction. In Figure 5, baseline wandering correction using a linear digital filter is shown.

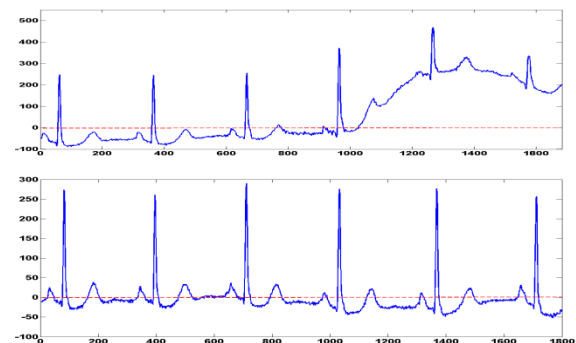


Figure 5. Baseline wandering correction (X-axis: samples, Y-axis: amplitude)

B. QRS detection using MIT-BIH ECG databases

The QRS detection provides the fundamentals for almost all automated ECG analysis algorithm. We tested the performance of the QRS detection on the MIT-BIH database, which is composed of half-hour recording of ECG of 48 ambulatory patients. The ECG recording “103.dat” shown in Figure 6 has been used to validate the algorithm and the following things are observed. The QRS detection algorithm [15] consists of several steps. First, the signal is passed through a digital band-pass filter. The pass band that maximizes the QRS energy is approximately in the 5-15 HZ range (Figure 6 (b)). Secondly,

differentiation step is a standard technique for finding the high slope that normally distinguish the QRS complexes from other ECG waves (Figure 6 (c)); The squaring process makes the result positive and emphasize large differences resulting from QRS complexes (Figure 6 (d)); The moving window integration provides the slope and width of the QRS complex (Figure 6 (e)). The choice of window sample size is an important parameter. We choose window of 83 ms (i.e., 30 samples for a sampling frequency of 360 samples/s). Finally, an adaptive threshold was applied to identify the location of QRS complexes (Figure 6 (f), (g)).

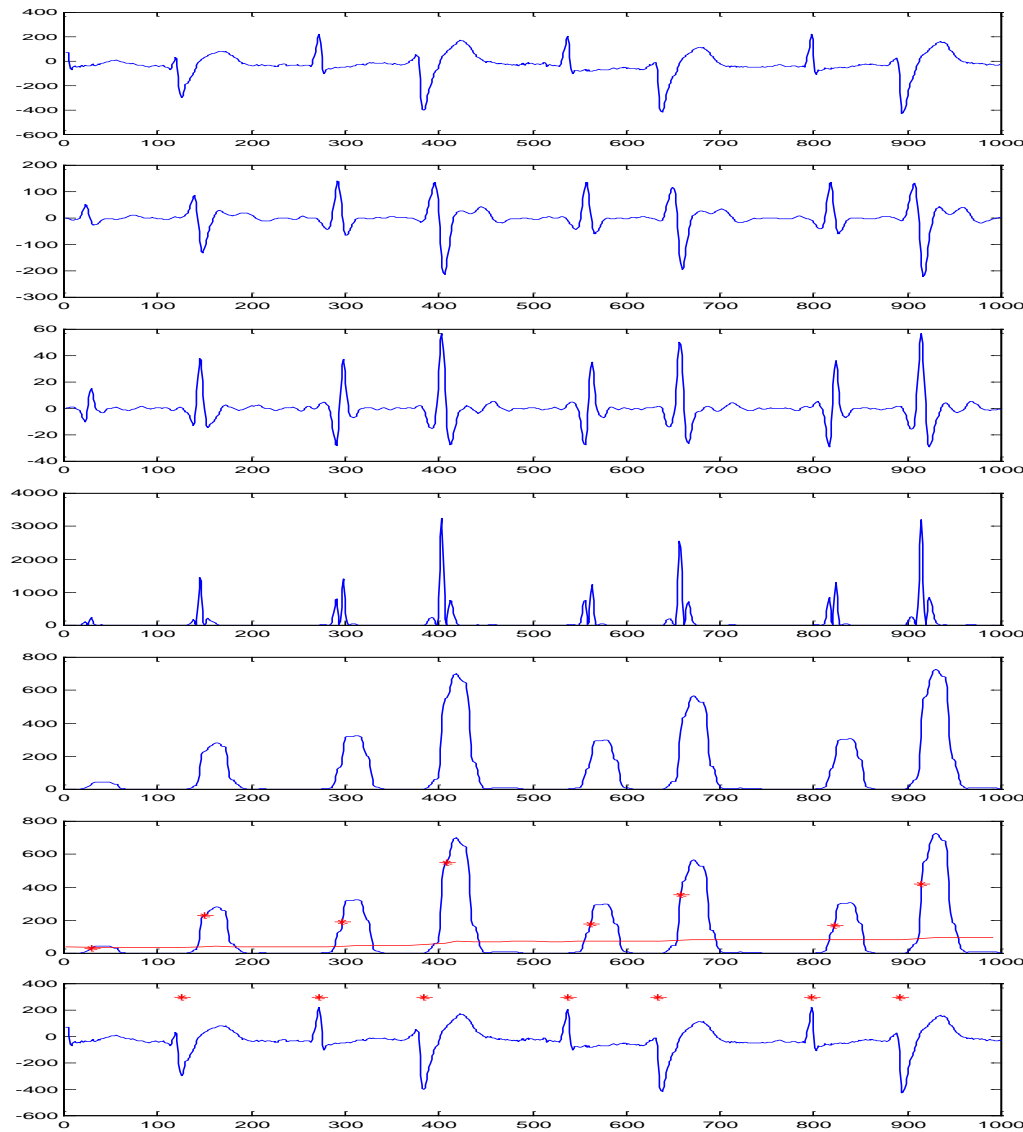


Figure 6. An example of QRS detection: (a) original ECG signal; (b) bandpass filter; (c) derivative; (d) square; (e) Moving window integrator; (f) QRS complex detection (X-axis: samples, Y-axis: amplitude)

C. Wireless Communication Test

Wireless communication module consists of master and slave. The master part transmitted after acquisition of ECG signal and amplification, and slave part received the signal and saved in data buffer. The master transmitted after conversion to digital value for 0 to 255 of the analog signal. Also, ECG hardware system and mobile phone communicate using

Bluetooth. When the master/slave wireless module is first connected, the master module looks for a wireless module and attempts pairing for 5 to 10 seconds. If the ECG signal acquisition device and mobile phone are paired properly, the master module provides information to mobile phone wireless module with master address (Master Bluetooth module local address: 001901216B70) and starts the data transmission. The

device pairing success rate was around 85%, and the system requires initialization time for data buffer and screen display for 3 to 5 seconds. Communication test results between devices are shown in Table 1. We tested 20 cases. The master and slave module of average Pairing Time (PT) are 783 ms; ECG Signal Transmission Time (ECG STT) is 355.75 ms.

TABLE I. RESULT OF WIRELESS COMMUNICATION

Index	PT	STT	Remark	Index	PT	STT	Remark
1	1,320	None	Disconnect	11	597	412	Connect
2	865	508	Connect	12	1,160	None	Disconnect
3	867	489	Connect	13	883	385	Connect
4	843	416	Connect	14	914	353	Connect
5	1,241	None	Disconnect	15	758	402	Connect
6	536	452	Connect	16	670	352	Connect
7	632	455	Connect	17	822	379	Connect
8	545	394	Connect	18	598	514	Connect
9	582	406	Connect	19	615	386	Connect
10	601	386	Connect	20	608	426	Connect

a. PT: Pairing Time, STT: ECG Signal Transmission Time (msec)

D. Mobile Application Program

The mobile application program consists of five screen activities. These activities are main view, Bluetooth search view, real-time ECG signal view, signal parameter view, and data management view. Figure 7 shows the application program. The main view is the operation four-function key as shown in Figure 7 (a), each function key is moving to another functional screen and emergency connection button. The Bluetooth view searching to the ECG acquisition device on the mobile phone is shown in Figure 7 (b). Without this functionality the user has to stop the application program and restart the application. After the system connects successfully to the hardware, the visualization of the ECG signal and calculated heart rate graph is shown in Figure 7 (c). In case of not pairing, the program shows “Turn on ECG device” message box on the ECG signal view. A figure 7 (d) and figure 7 (e) is a user optional screen. Signal parameter view display calculated signal parameters: Heart Rate (HR), QRS duration, QT/QTc, PR and RR-interval. Data management view is displayed in case the measurement of ECG data has preserved for information. In order to search the previous ECG data the user has two options, either using drop list or calendar.

IV. CONCLUSIONS

The advances in mobile communication open up opportunities for developing mobile healthcare systems that monitor biomedical signals from patients. We developed such an ECG monitoring device for the advanced personal healthcare system using a mobile phone. The preliminary results showed a successful test of this mobile healthcare application. However, there are scopes of improvement, such as noise reduction, external memory expansion, memory space utilization, inclusion of more diagnostic parameters, and measurement of the physiological signals. Also, we would study the system safety for clinical trials in a variety of conditions. Above all, heart rate is a vital sign to determine the patient’s condition and well-being. The heart rate monitoring tool should avoid any wrong results.

Finally, portable mobile healthcare has the potential to reduce long-term costs and improve quality of medical service,

but it also faces many technical challenges. In future, more research on the small wireless electrical sensors and data compress technology for healthcare system is needed. The development of mobile health monitoring system would allow basic medical assessment of patients provided by medical staffs.



Figure 7. Mobile Phone Configuration: (a) monitoring system main view; (b) wireless connection; (c) real-time display of the ECG measurement; (d) the ECG parameters calculation value; (e) data history and management

ACKNOWLEDGMENT

Financial supports from North Dakota EPSCoR Grant #UND0014095 and University of North Dakota Faculty Research Seed Money #21418-4010-01843 are gratefully acknowledged.

REFERENCES

- [1] B. A. Walker, A. H. Khandoker, & J. Black, “Low cost ECG monitor for developing countries”, 2009 Fifth International conference on Intelligent Sensors, Sensor Networks and Information processing (ISSNIP), pp 195-200, December 2009.
- [2] H. E. Sheref, S. Pham, N. E. Sherif, and E. Care, "Clinical evaluation of ECG data compression techniques for ambulatory recording", IEEE Conference on Engineering in Medicine and Biology, pp.1306-1307, November 1994.
- [3] E. Jovanov, T. Martin, and D. Raskovic, “Issues in wearable computing for medical monitoring application: a case study of a wearable ECG monitoring device,” The Forth International Symposium. Wearable Computers (ISWC), pp.43-49, October 2000.
- [4] K. Y. Kong, C. Y. Ng, and K. Ong, “Web-Based Monitoring of Real-Time ECG Data,” Computers in Cardiology 2000, pp. 189-192, September 2000.
- [5] J. R. Chang Chien, and C.C. Tai, “A new wireless type physiological signal measuring system using a PDA and the bluetooth technology,” Biomedical Engineering: Applications, Basis and Communication, Vol. 15, No. 5, pp.229-235, October 2005.
- [6] D. Kammer, G. McNutt, and B. Senese, “Bluetooth Application Developer’s Guide”, Syngress Publishing, Rockland, Mass, USA, 2002.
- [7] S. Pooranchandra and N. Kumaravel, “A novel method for elimination of power line frequency in ECG signal using hyper shrinkage function,” Digital Signal Processing, Vol. 18, No. 2, pp.116-126, March 2008.
- [8] A. K. Ziarani and A. Konard, “A nonlinear adaptive method of elimination of power line interference in ECG signals,” IEEE

Transaction Biomedical Engineering, Vol. 49, No. 6, pp.540-547, June 2002.

- [9] G. Mihov, I. Dotsinsky, and T. Georgieva, "Subtraction procedure for powerline interference removing from ECG: improvement for non-multiple sampling," *Journal of Medical Engineering & Technology*, Vol. 29, No. 5, pp.238-243, September-October 2005.
- [10] C. R. Meyer and H. N. Keiser, "Electrocardiogram baseline noise estimation and removal using cubic splines and state space computation techniques," *Computers and Biomedical Research*, Vol. 10, No. 5, pp.459-470, October 1997.
- [11] J. A. Van Alste, W. Van Eck, and O. E. Herrmann, "ECG baseline wander reduction using linear phase filters," *Computers and Biomedical Research*, Vol. 19, No. 5, pp.417-427, 1986.
- [12] Wikipedia, "Schematic diagram of normal sinus rhythm for a human heart as seen on ECG," January 2007,
- [13] Available: <http://en.wikipedia.org/wiki/File:SinusRhythmLabels.svg>
- [14] A. D. Jurik, J. F. Bolus, A. C. Weaver, B. H. Calhoun, and T. N. Blalock, "Mobile health monitoring through biotelemetry," *The Fourth International Conference on Body Area Networks*, April 2009.
- [15] D. P. Coutinho, A. L. N. Fred, and M. A. T. Figueiredo, "One-lead ECG based personal identification using Ziv-Merhav cross parsing," *20th International Conference on Pattern Recognition*, pp.3858-3861, August 2010.
- [16] J. Pan, & W. J. Tompkins, "A real-time QRS detection algorithm," *IEEE Transactions on Biomedical Engineering*, Vol. 32, No. 3, pp.230-236, March 1985.
- [17] L. Biel, O. Pettersson, L. Philipson, and P. Wide, "ECG analysis-a new approach in human identification," *IEEE Transactions on Instrumentation and Measurement*, Vol. 50, No. 3, pp.808-812, June 2001.
- [18] Massachusetts Institute of Technology. MIT-BIH ECG database. Available: <http://ecg.mit.edu/>.
- [19] W. Holsinger, K. Kempner, & M. Miller, "A QRS preprocessor based on digital differentiation," *IEEE Transaction on Biomedical Engineering*, Vol. 18, No. 3, pp.212-217, May 1971.
- [20] S. Mallat, & W. Hwang, "Singularity detection and processing with wavelets," *IEEE Transactions on information theory*, Vol. 38, No. 2, pp.617-643, March 1992.
- [21] S. Kadambe, R. Murray, & G. B. Bartels, "Wavelet transform-based QRS complex detector," *IEEE Transactions on Biomedical Engineering*, Vol. 46, No. 7, pp.838-848, July 1999.
- [22] M. Bahoura, M. Hassani, & M. Hubin, "DSP implementation of wavelet transform for real time ECG wave forms detection and heart rate analysis," *Computer methods and programs in biomedicine*, Vol. 52, No. 1, pp.35-44, January 1997.
- [23] J. Sahambi, S. Tandon, & R. Bhatt, "Using wavelet transforms for ECG characterization An on-linedigital signal processing system", *IEEE Engineering in Medicine and Biology Magazine*, Vol. 16, No. 1, pp.77-83, January-February 1997.

AUTHORS PROFILE

Duck Hee Lee received the MS degree in biomedical engineering from the Hanyang University, Seoul, South Korea in 2004. From 2005 to 2009, he worked at the Biomedical Engineering Division of the National Cancer Center (NCC), South Korea, developing a surgical robot system. In 2010, he was appointed Researcher of the University of North Dakota, Biomedical Signal Processing Laboratory, USA. Since 2004, he has worked on biomedical engineering research fields. His research interests include medical device and instrument, biomedical signal processing, and surgical robotics. He authored and co-authored more ten articles journals, conference proceedings and book chapter. He is a member of Korea Society for Medical and Biological.

Ahmed Rabbi received his B.Sc. and M.S. in Applied Physics, Electronics and Communication Engineering from the University of Dhaka, Bangladesh in 2004 and 2006 respectively. From 2007 to 2009 he worked as a telecom switching engineer at Alcatel-Lucent Bangladesh coming to UND for graduate study. Currently, he is a Ph.D. student at the department of Electrical Engineering, University of North Dakota, USA. His research interests are biomedical signal and image processing, EEG signal processing, EEG-movement artifacts detection and filtering, epileptic seizure detection and prediction, and human performance assessment using EEG signals. He has participated as program committee member of an international conference. He has published over ten articles in refereed journals, conference proceedings and co-authored a book chapter. He is an active member of the IEEE and IEEE Engineering in Medicine and Biology Society (EMBS).

Jaesoon Choi received the Ph.D. degree in biomedical engineering from the Seoul National University, Seoul, South Korea in 2003. Since 2003, he has worked on biomedical engineering research fields. In 2011, he was appointed Research Professor of the Korea Artificial Organ Center (KAOC), Seoul, South Korea. He was responsible for various national and international research projects focused on key components for surgery robot system. His research interests include medical device and instrument, medical fusion multi-modal simulation, Vision-Haptic-Integrated Control Mechanism, and surgical robotics. He authored and coauthored more than 30 articles and holds ten patents. He is a member of Korea Society for Medical and Biological, Institute of Electrical and Electronics Engineers (IEEE), and International Society for Pediatric Mechanical Cardiopulmonary Support.

Reza Fazel-Rezai received his BSc. and M.Sc. in Electrical Engineering and Biomedical Engineering in 1990 and 1993, respectively. He received his Ph.D. in Electrical Engineering from the University of Manitoba in Winnipeg, Canada in 1999. From 2000 to 2002, he worked in industry as a senior research scientist and research team manager. Then, he joined academia at Sharif University of Technology and later the University of Manitoba as Assistant Professor in 2002 and 2004, respectively. Currently, he is Assistant Professor and the Director of Biomedical Signal Processing Laboratory at the Department of Electrical Engineering, University of North Dakota, USA. His research interests include biomedical engineering, signal and image processing, brain computer interface, EEG signal processing, seizure detection and prediction, neuro-feedback, and human performance evaluation based on EEG signals.